

Inductive Sensor Product Portfolio

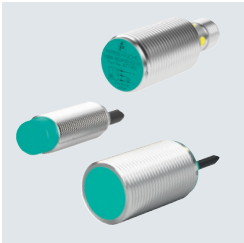
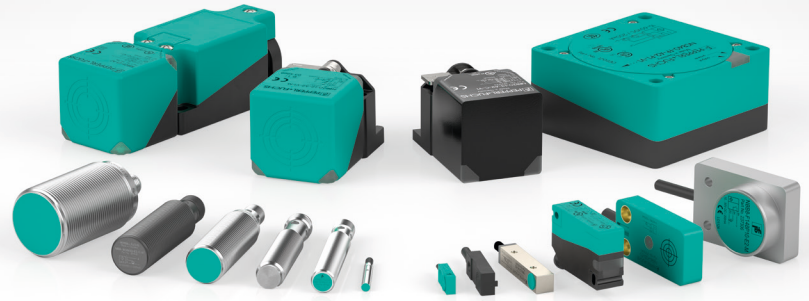
The Inventor of the World's First
Inductive Proximity Sensor

Line Card

www.pepperl-fuchs.com



Click or scan



Standard Cylindrical

Widest offering in the industry

- Available for all supply voltages (DC, AC/DC) and output signals (NPN, PNP, analog, NAMUR, IO-Link)
- Smooth sleeve (3, 4, 6.5, 11 mm) and threaded sleeve (M4, M5, M8, M12, M14, M18, M30) versions
- Sensing ranges vary from 0.8 ... 40 mm
- Rugged and durable, perfect for use in harsh industrial environments



Surface Mount (Limit Switch & Flat Pack), Slot, and Ring

Perfectly versatile, suitable for any task

- Available for all supply voltages (DC, AC/DC) and output signals (NPN, PNP, two-wire, NAMUR, IO-Link)
- Many models available with 5-way positioning head and 4 LED indication for 360° visibility
- Surface mount sensing ranges vary from 15 ... 100 mm
- Rugged for use in harsh industrial environments
- Specialized ring and slot housings, sensing ranges vary from 2 ... 43 mm



Pile Driver

Maximum durability

- Milled from solid stainless steel, resistant to mechanical shock
- Extended sensing ranges vary from 5 ... 15 mm
- Low-profile surface mount perfect for die applications with sensing ranges varying from 2 ... 6 mm
- Weld-immune versions with high-temperature POC cable and Ryton coating
- IP68 / IP69K degree of protection
- Versions rated for temperatures down to -40 °C



Reduction Factor 1

Identical switching for all metals

- Cylindrical and surface-mount designs with sensing ranges varying from 1.5 ... 50 mm
- Available for DC supply voltages and output signals (NPN, PNP, IO-Link)
- Weld-immune versions with high-temperature POC cable and Ryton coating
- Food & Beverage versions – 316L stainless steel / FDA-certified plastic for a rustproof, chemically resistant sensor



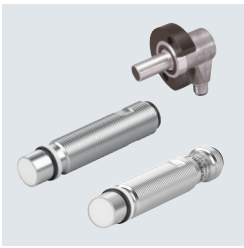
Weld-Immune

Magnetic-field and slag resistant

- Designed to perform in the toughest applications
- Available in extended range and reduction factor 1
- Numerous designs in cylindrical and surface mount with varied sensing distances ranging from 1.5 ... 75 mm
- Available for all supply voltages (DC, AC/DC) and output signals (NPN, PNP, IO-Link)
- High-temperature POC cable and Ryton coating, IP68 / IP69K degree of protection

Your automation, our passion.

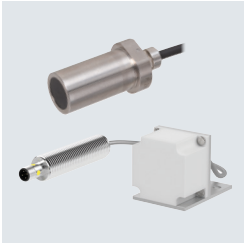
 **PEPPERL+FUCHS**



Pressure-Resistant

Effective under pressure

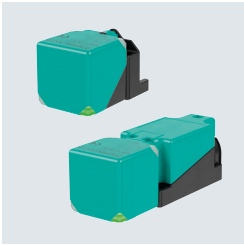
- Tailored to applications in hydraulic and pneumatic cylinders
- Extremely rugged design for pressures up to 3,000 psi
- Available for all supply voltages (DC, AC/DC) and output signals (NPN, PNP, NAMUR)
- Weld-immune versions available
- Universal mounting design



Extended Temperature

Optimized for high temperature applications

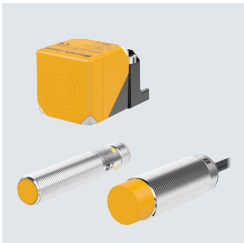
- Versions reliable at high temperatures up to 250 °C
- Available for all supply voltages (DC, AC/DC) and output signals (NPN, PNP, analog, NAMUR, relay)
- Versions rated for low temperatures down to -50 °C
- Quick and easy commissioning due to sensor calibration at high temperatures



Active Shielding

Ensuring stability and experiencing reliability

- Actively detects both target and installation environment, automatically compensates sensitivity to maintain long and stable sensing range
- Repeatable sensing distances of 30 mm (shielded) and 50 mm (non-shielded)
- 5-way positioning of sensor heads for ease in mounting
- Corner LED locations improve status indication
- Internal testing exceeds industry machine requirements



Safety

SIL 2/PL d inductive safety sensors

- Standardized OSSD interface allows direct connection to the safety controller or PLC
- No dead band or coded magnet required – any metal target can be used
- Redundant implementation allows for SIL 3/PL e
- Suitable for demanding applications with extended temperature and voltage range (12 ... 24 V)
- IP68 / IP69 degree of protection



Valve Position Detection

Direct mounting on standard valve actuators

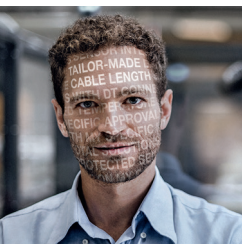
- Durable and maintenance-free solution due to noncontact, dual sensor technology
- Available for all supply voltages (DC, AC/DC) and output signals (PNP, NAMUR, low-voltage, AS-Interface)
- Highly visible valve position indicator
- Activator variants for different actuators sizes and types, such as manual valves
- Versions with IECEx, UL, CSA, UKCA, INMETRO, CCCEX, CCC, and ATEX certifications for use in hazardous areas, including IECEx Zone 2/22



Mobile Equipment Rated

Reliability under the toughest conditions

- E1 type approval and EMC immunity
- High impermeability, resistance to shock, vibration, and chemicals, extended temperature range (-40 ... +85 °C)
- Digital Voltage sensors (0.5/4.5 V) with integral short circuit and broken wire detection diagnostics
- Customizable Deutsch connectors for extreme resilience



Custom Applications

As individual as you

- Tailored to your individual needs and applications
- Can range from minor adjustments to specifically developed products
- Comprehensive process that can include adjustment of design, mounting options, hardware, or even software.
- Seamless system integration with your system requirements
- The right solution, no compromises